



## **O&M Innovations**

Impact of PV innovations over a solar plant's day-to-day operations and maintenance

# Soltec

Soltec specializes in the manufacture and supply of **single-axis solar trackers** with global operations and a workforce of **over 750 people** blending experience with innovation.

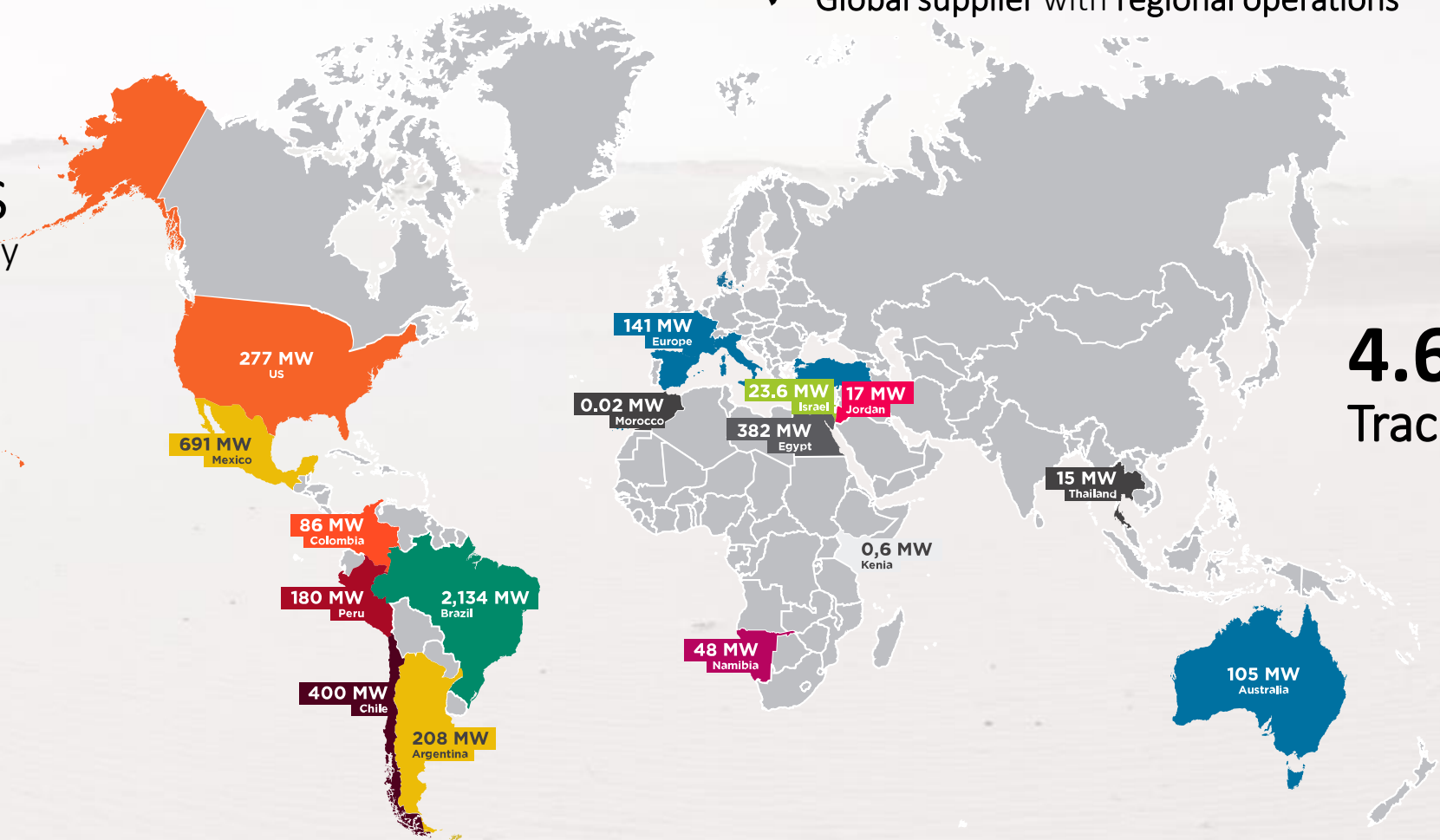
- ✓ **Top-tier** manufacturer and supplier
- ✓ Tracking Specialist with **14 years** history
- ✓ Specialist in **customer experience** and innovation
- ✓ Investor in **growth and people**
- ✓ **Global supplier** with **regional operations**

14 Years  
Company History

1+ GW  
Annual Sales

Top 3  
Global Tracker  
Supplier (2017)

4.6+ GW  
Track-record





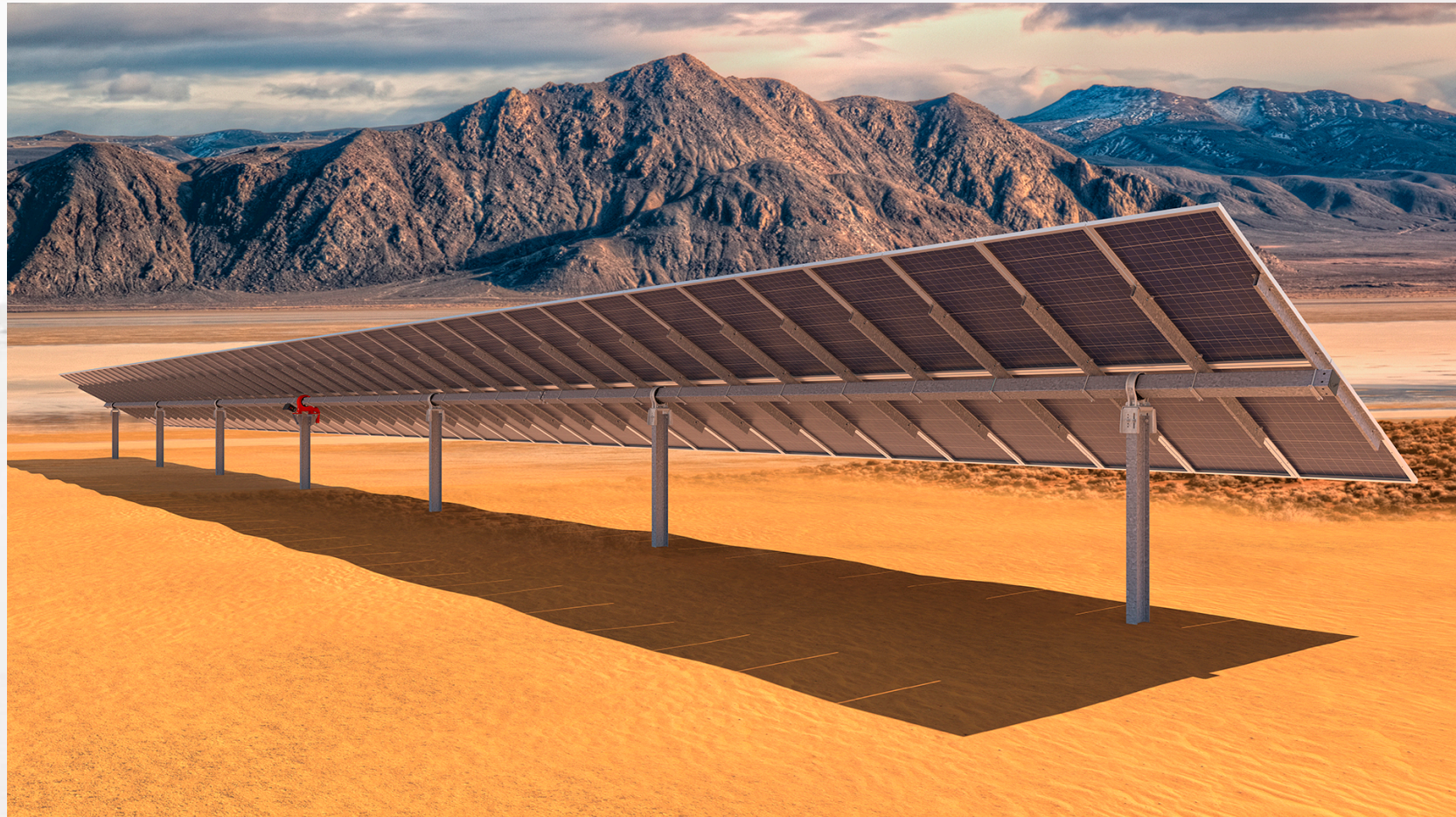


Single-Axis  
Tracker

SF7 is the solar tracker with the **highest yield-per-acre** performance and **greatest land-use options**, ideal for large-scale PV tracking projects. Those features combined with proven **cost-effective installation and operation** have driven Soltec and SF7 to the top-tier globally.

### Maintenance advantages:

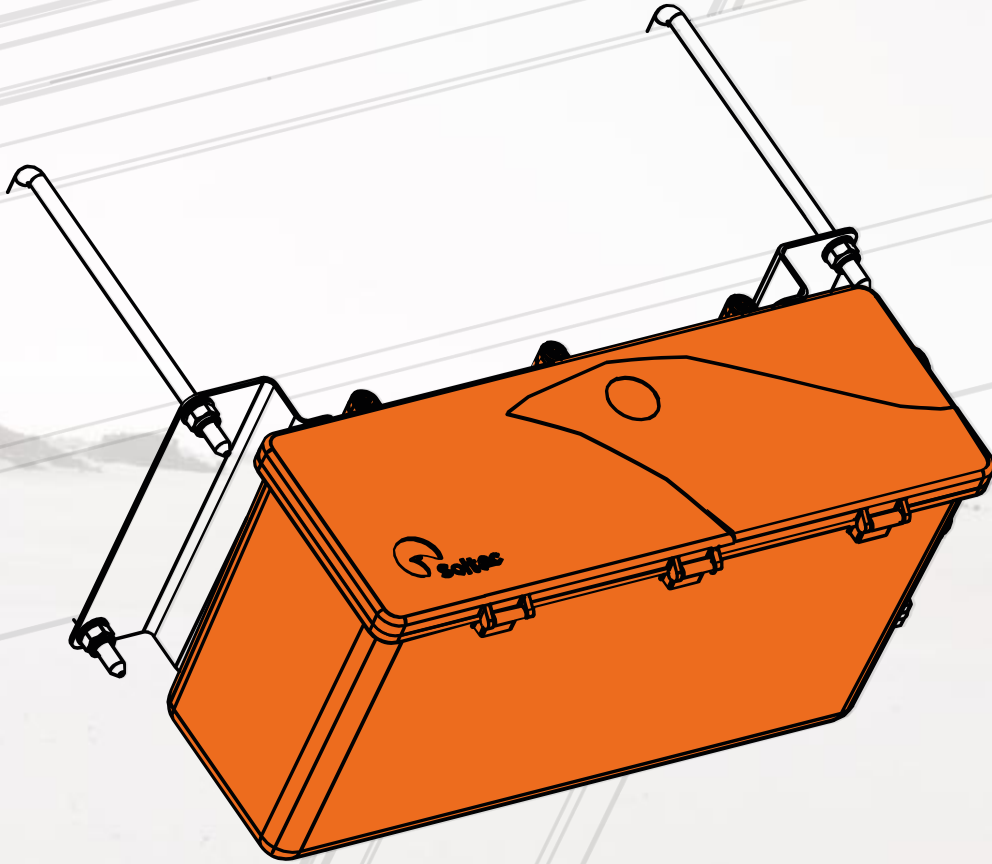
- ✓ Self-lubricating bearings
- ✓ Sealed slewing drive
- ✓ Guaranteed availability >99%



# Self-Powered

**Provides lowest cost operational power supply**

With the unique **PV Series Power Supply** at each tracker, high system availability is assured by leveraging the tremendous series-string power availability to supply **the lowest cost operational power** onsite; and with **zero impact on revenue generating PV active-area.**





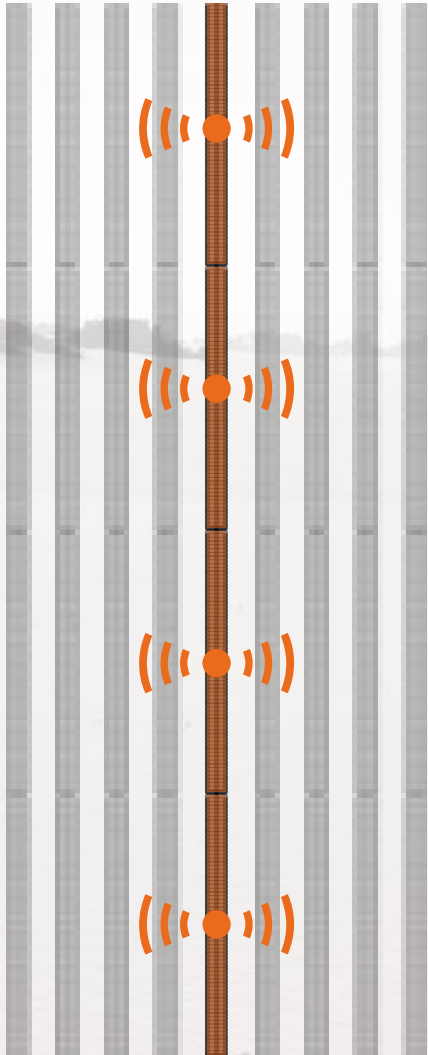
# DC Harness StringRunner

Automotive type quick-connect  
PV source circuit combiner.

Manages high-protection  
cabling of PV source circuits.

- ✓ Fewer parts
- ✓ Lower material cost
- ✓ Lower installation labor

# Wireless Communication

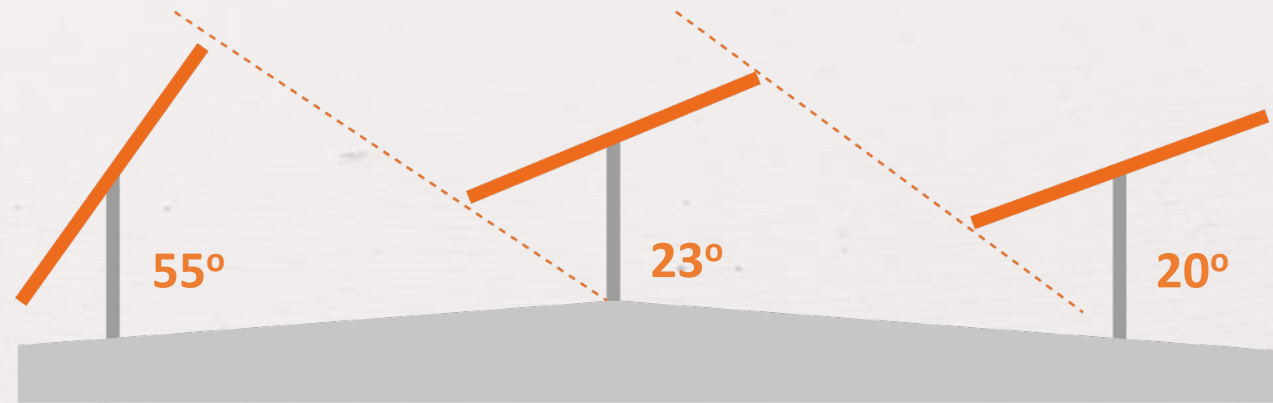


Our wireless mesh communication network provides **real time data between each tracker and central control** with less material cost and installation labor.

- ✓ Local and Wide Area **Wireless**
- ✓ Near Field Communications (**NFC**) at tracker level
- ✓ **SCADA** interface at plant level

## TeamTrack

Asymmetric backtracking achieves team-tracking operation that **reduces inter-row shading losses due to irregular terrain.**

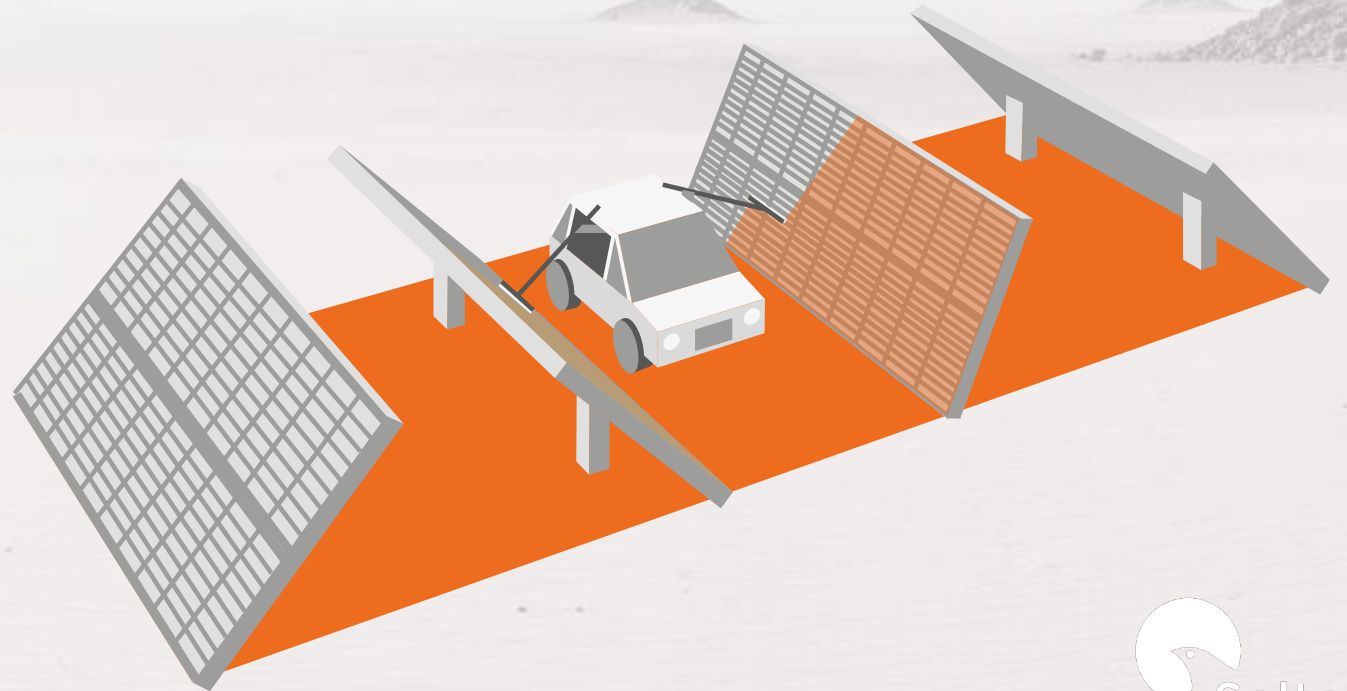


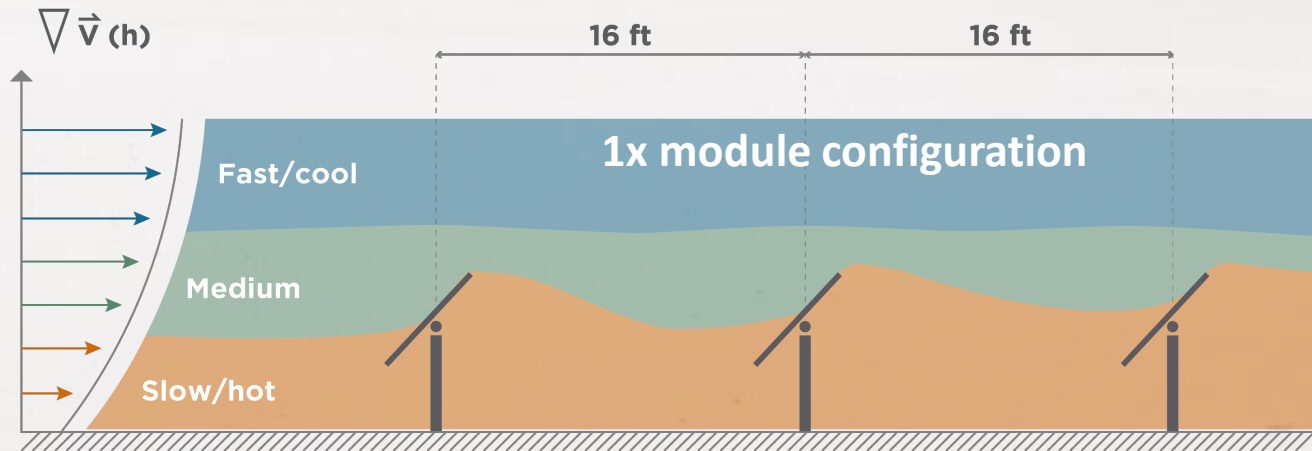
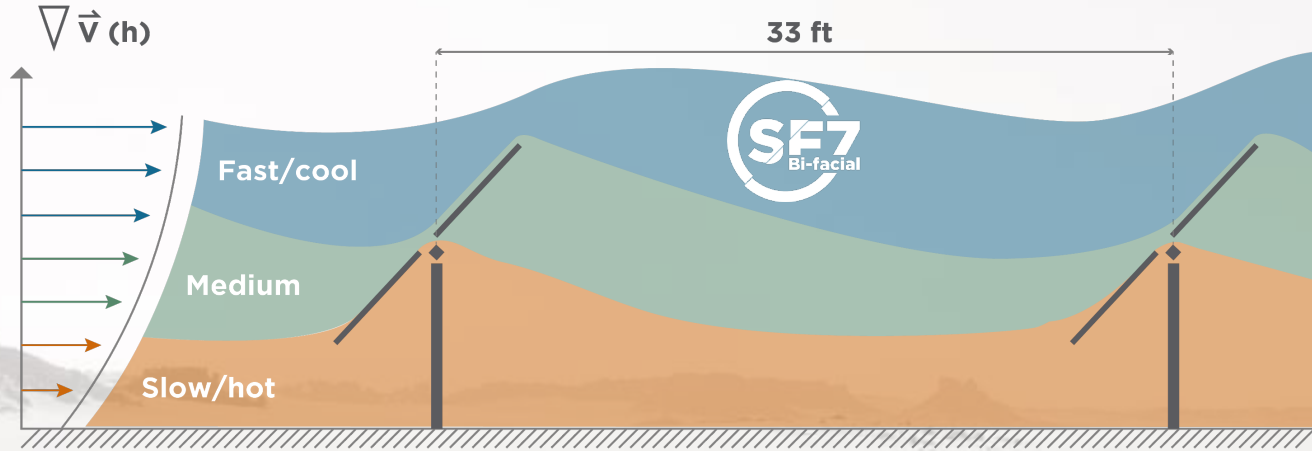
# Cleaning

The non-obstructed and wider aisles between tracker-rows provide **greater access** in addition to other maintenance control features that add **up to low-cost maintenance**.

SF7 uniquely **doubles** the MW washing rate per vehicle pass and vegetation control, eased by the **face-to-face tracker positioning**. **Snow-load dumping** is supported too as well as **nocturnal positioning self-cleaning using just dew drops**.

In addition, SF7 is compatible with **water-free and automated cleaning solutions** for utility-scale solar PV plants to solve the challenge of dust in arid regions and deserts.





## SF7 Bifacial

The cabling management solution DC Harness StringRunner and the absence of dampers not only eliminate **bifacial backside shading** but also provide the highest-grade cabling protection against environmental conditions, requiring zero maintenance.

### Other maintenance advantages:

- ✓ Higher pitch eases air flow
- ✓ Torque-tube gap improves the air flow
- ✓ The upper module is cooler
- ✓ Every other SF7 advantage





# THANK YOU

**José Alfonso Teruel**  
R&D Manager  
[jose.teruel@soltec.com](mailto:jose.teruel@soltec.com)

